



24/04/2026

Dear Families,

The past couple of weeks at Glenealy have been filled with activity since our return from the spring holiday. Our Year 6 students participated in a valuable transition visit to Island School, where they had the opportunity to experience classes with their new teachers.

The main focus, of course, has been our Student Learning Conferences. Thank you to all our families for coming into school and for supporting the process of reflection and celebration of children's achievements. We hope that the opportunity to meet with teachers has given you helpful insight into your child's learning and progress at school.

A huge thanks to our incredible new parent gardening team! Several parents have been busy keeping our rooftop garden blooming, and we're grateful for the mentoring of our students and helping them grow their gardening skills.

Thank you to everyone who completed the short survey we held as part of the conference. Your feedback is important and will help us to continue improving our provision in this area next year. If you haven't had a chance to complete the survey, please refer to the link which will be emailed to you by your child's class teacher.

Wishing everyone an enjoyable weekend!

Christopher Coyle

Principal

DATES & EVENTS

An overview of the key dates and school events can be found in the calendar on the ESF App. You can also find the school calendar on our school website at https://glenealy.esf.edu.hk/parent/school_information/school_calendar/

Please make a note of the following events that will take place in Term 3:



KEY DATES Term 3 - 2025/2026

- **28 April** - Term 3 ECAs begin
- **29 April** - ESF Primary Choral Concert at QES
- **01 May** - Public Holiday (Labour Day)
- **08 May** - PTA Y2 Bake Sale Fundraiser
- **14 May** - PTA Family Bingo Night
- **15 May** - International Day of Families
- **25 May** - Public Holiday (Buddha's Birthday)
- **29 May** - ESF Wide Transition Day
- **04 June** - Glenealy Art Walk (5:00 PM - 6:30 PM)

- **12 June** - Y1 & Y2 Dance Show
- PTA Y1 Bake Sale Fundraiser
- **19 June** - Public Holiday (Tuen Ng Festival)
- **23 June** - Move Up Day
- Y6 Graduation
- **25 June** - End of Year Reports Go Live
- **26 June** - End of T3: half day

SCHOOL TERMS & KEY DATES 2025/2026

Please find a copy of the School Calendar at the following links:

- **2025/2026:**  [GS Calendar 25_26.pdf](#)
- **2026/2027:**  [GS Calendar 26_27.pdf](#)

STUDENT CONFERENCE FEEDBACK


If you have not done so already, please complete the student conference feedback. Your feedback will help us to enhance our provision in this area next year. Please complete a separate survey for each child.

Please look out for the student conference feedback links, which will be sent to you by your child's class teacher in the weekly learning links located on the VLE.

ONLINE LEARNING PROVISION

We have updated our online learning procedures for class suspensions during severe weather. This review was conducted alongside other ESF schools to ensure a consistent approach that maximises learning opportunities for all our students.

Our updated arrangements are now live. As we enter the season for potential weather disruptions, we ask all families to review the details via the link below:

 [GS Online Learning Provision \(parent version\).pdf](#)

If you have any questions about our new arrangements, please do not hesitate to contact us.

YEARBOOK FRONT COVER COMPETITION

We are in the process of creating our 2025 - 2026 Yearbook and invite students to submit their entry for the front cover competition. Entries should be portrait orientation, created on A4 paper or card and submitted to the school office by Friday 15th May. We ask that children please ensure they have written their name, last name and class on the back of their design. Please Do NOT include writing in your design (the words Glenealy School Yearbook 2025 - 2026 will be printed by the publisher). We look forward to receiving the students' submissions.

CARBON AUDIT

ESF is currently performing a comprehensive carbon audit of our operations. This is a vital milestone in our ESG (Environmental, Social, and Governance) journey; by establishing reliable baseline data, we can ensure that ESF's future sustainability actions are impactful and evidence-based.

A significant part of our carbon footprint relates to student travel, and over the coming weeks, our students will be helping us measure this impact. This month all year groups will spend time exploring what a carbon footprint is and how their daily school journeys play a role. To gather the necessary data, we are taking two different approaches based on age group:

- Years 3 to 6: These students will be completing the travel survey in school with the support of their class teachers.
- Years 1 and 2: As our younger students are still developing their understanding of distance and specific travel routes, the survey has been sent home. Please check for an App message titled 'ESF Carbon Audit Deadline 30th April'

By participating in this audit, our students are at the heart of ESF's mission to become a more sustainable organisation. The valid and reliable data we collect, both in the classroom and at home, will serve as the foundation for our future environmental initiatives.

ESF HUB UPDATE

We are excited about the implementation of the new 'ESF Hub' in August 2026. The ESF Hub will provide us with a modern and scalable online platform that enhances collaboration, efficiency and innovation across our schools. The new system replaces the VLE, Google Classroom, Tapestry and elements of Gateway, and has the capacity to meet our evolving needs into the future.

Please keep an eye on the school newsletter for further information and updates in the weeks ahead.

SAFEGUARDING AND CHILD PROTECTION

At ESF, keeping children safe is our highest priority. Hong Kong's new mandatory reporting law requires all teachers and staff to report serious safety concerns, and our staff are fully trained to meet these responsibilities.

We follow five safeguarding principles:

- Putting children's best interests first
- Partnering with families and communities
- Creating safe, supportive environments and opposing harmful practices, including corporal punishment
- Preventing harm and responding quickly to concerns
- Acting with accountability and confidentiality

Each school has designated **Child Protection Officers (CPOs)** who lead safeguarding efforts. Their contact details are available on your school's website under "**What we stand for.**"

Please find linked here our [Safeguarding and Child Protection Brochure](#), which explains how we protect children from harm.

SUNSCREEN, HATS AND MOSQUITO REPELLENT

With the warmer weather returning, we'd like to remind families that hats are required for outdoor play and class activities. We also ask that sunscreen and mosquito repellent be applied at home before students set out for school.

The school continues to take proactive steps to reduce mosquito presence on campus, and government departments regularly spray along Hornsey Road to support this work.

STUDENT MEDICATION

To ensure safe and compliant medication practices at school, any medication requiring administration must be accompanied by a prescription from the region of domicile and a Medical Authorisation Form. In line with our medical policy, we are not permitted to administer over-the-counter medication to students, including during trips and camps.

If you require further information or support, please contact our School Nurse.

ESF COMBINED PRIMARY CHOIR CONCERT Next Week (April 28 & 29 @ 7pm)

Please note that only Year 5 students are participating in this concert. If you would like to come and support the Year 5s in their extravaganza at Queen Elizabeth Stadium, you can purchase tickets through [Urbtix](#).

LOVE RECYCLING

We are thrilled to announce that, thanks to the passionate advocacy of our Student Council and several inspiring Year 6 Exhibition groups, our school is officially partnering with 'Love Recycling'! This move marks a significant step forward in our commitment to sustainability and teaching our students the importance of environmental stewardship.

During our whole school assembly on Friday 24th April, students met Kenny, from Love Recycling who introduced our new recycling programme. Our new recycling bins will enable us to recycle:

- Paper & Cardboard
- Metal
- Glass
- Plastic
- Tetra Paks
- Crisp Packets

By using 'Love Recycling', we are ensuring that a much higher percentage of our school's daily waste is diverted from landfills. We encourage you to talk with your children about our recycling categories at home. Whether it's ensuring their empty juice carton (Tetra Pak) or crisp packet finds the right bin or exploring what recycling opportunities your family can engage in, every small action helps. .

VOLUNTEER GARDENERS

Our Rooftop Garden is buzzing with activity! We are so excited to share that our new Volunteer Gardening Club officially kicked off this week.

Our volunteers are currently supporting our young gardeners every Monday, Wednesday and Friday with a variety of tasks including weeding, watering, maintaining our compost bins, sowing seeds and transplanting young seedlings. Hopefully with support from our gardener volunteers we will have an increasing amount of fresh produce for our Glenealy Cafe and Bake Sales.

We want to extend a huge thank you to the volunteers who are committing their time to ensuring our rooftop garden remains a vibrant, hands-on learning environment for every child at Glenealy.

SUSTAINABILITY SQUAD

Calling all eco-warriors! We are officially launching the School Sustainability Squad and looking for passionate Year 3-5 students to lead the way.

Supported by Ms Jones, the squad will be responsible for several key "green" missions around our school, including:

- Composting Champions: Managing garden and food waste to help our school grounds flourish
- Recycling Experts: Sorting materials and ensuring we are recycling as effectively as possible
- Eco-Events: Helping implement sustainable ideas for our Community events
- Student Voices: The squad will have the opportunity to initiate their own further actions

If your child is passionate about the environment and wants to represent their class, please encourage them to speak to their Student Council representative to express their interest.

ESF SCHOOLS CITY NATURE CHALLENGE 2026

This global event is a unique opportunity for our students to become citizen scientists, helping to document and celebrate Hong Kong's incredible biodiversity. To prepare for this challenge, students have already started to hone their identification skills and record local wildlife data via the iNaturalist app in our new Outdoor Classroom.!

We want to extend a **huge thank you** to the families who have already begun recording their observations during the evenings and weekends! We would love for even more of you to join the mission; the City Nature Challenge thrives when our entire community gets involved. Whether you are strolling through Mid-Levels or trekking your favourite hiking trail, every upload makes this event a success

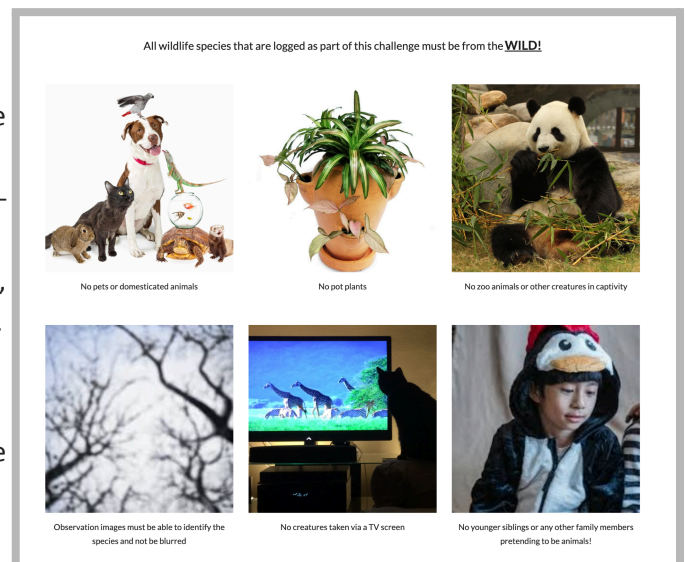
To participate, simply:

1. Download the iNaturalist app onto your mobile device.
2. Create an account and join the ESF Schools project- Glenealy School
3. Start documenting! Snap **WILD** photos of plants, animals, and fungi between 17th April and 1st May.

Challenge Guidance

All wildlife species that are logged as part of this challenge must be from the **WILD!**

- No pets
- No pot plants
- No Zoo animals
- No animals on TV
- No family members pretending to be animals



Let's Beat Our Record! Last year, our school community made 126 observations. This year, let's build on that success and make an even greater impact. Together, we can foster a deeper understanding of our local environment and inspire the next generation of sustainability champions.

For more details please visit the official [website](#)

INTERNATIONAL FAMILY DAY

At Glenealy, we believe that our families are the **heart of our community** and that your unique stories enrich our students' lives. To celebrate **International Family Day**, we would love to invite you to share a **passion, craft, or cultural tradition** for an afternoon!

We are looking for volunteers to run a **one-hour workshop** for our students (Year 1-6). This is a wonderful opportunity to share a piece of your heritage, a unique cultural tradition, a hobby, or a skill that is significant to you and/or your family. Whether it's teaching a traditional dance, demonstrating a craft, sharing a family story, or showing us how to play a game from your home country, we want to learn from you!

- **Date:** Friday 15th May
- **Time:** 1.20 - 2.20 (1.00-2.30 in school)
- **Goal:** To celebrate our diverse community through hands-on, engaging activities.

Note: You don't need to have any teaching experience! We are just looking for passion and a willingness to share. We will pair you with a staff member to help with classroom management. Even if you are not sure what a workshop could fully entail, please sign up on the Google form and we can have a further conversation.

[International Family Day Google Form](#)

HOUSE TALENT SHOW

As part of our house events at Glenealy School, we will be hosting our first-ever "Has Your House Got Talent?" This will be a talent show open to all year groups. Next week, students will be invited to sign up. Students can take part as soloists or in a group with fellow members of their house. Please talk to your child about this and help to prepare them if they would like to be involved. Once we know the number of acts, we will have auditions during lunch playtimes. The best acts in each house will perform during the assembly on **Friday 5th June**, for our judges. Winners will win 100 points for their house.



NEWS FROM THE HUB

GENTLY USED UNIFORM SALE

The PTA will be holding a gently used uniform sale on **Thursday 30th April** at morning drop off (8.15am to 9am) and afternoon pick up (2.45pm to 3.15pm). We will also be selling Glenealy tote bags and bottles so stop by with cash in small denominations (notes only). Happy shopping!



Y2 BAKE SALE FUNDRAISER - FRIDAY 8 MAY 2026

Get ready for a delightful afternoon at our Y2 Bake Sale on the playground on Friday 8 May! Gates will open at 3:00 PM, so come hungry and excited for some tasty treats. It's a perfect opportunity to enjoy a special treat, socialise, and support our school community. We can't wait to see you there

Important Note: We kindly ask that you bring small denomination notes, as we will not be accepting coins.

FAMILY BINGO NIGHT - SAVE THE DATE - THURSDAY 14 MAY 2026

Mark your calendars and get ready for some family fun on Thursday 14 May 2026 at Family Bingo Night. Details to follow.



PTA EVENTS GALLERY

[Winter Fair](#)

[Y6 Bake Sale Fundraiser](#)

[Y5 Bake Sale Fundraiser](#)

[CNY Market & Y4 Bake Sale Fundraiser](#)

[Y3 Bake Sale Fundraiser](#)

[Diwali Celebrations](#)

[Christmas Celebrations](#)

[Hanukkah Celebrations](#)

[Eid Celebrations](#)

[Annual General Meeting](#)

[Parent Workshop Series : Basic First Aid](#)